

**INOX** Vidrio 6/8/10/12 mm

### POMO 16 x 25 mm

AISI-304

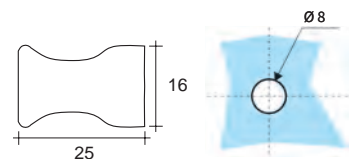
**DOBLE**

Acabados:

Inox brillo	<b>889.5J IB</b>
Inox mate	<b>889.5J IM</b>

**SIMPLE**

**889.5**



1901

### POMO 30 x 25 mm

AISI-304

**DOBLE**

Inox brillo	<b>889.6J IB</b>
Inox mate	<b>889.6J IM</b>
Negro mate	<b>889.6J NE</b>

**SIMPLE**

**889.6**

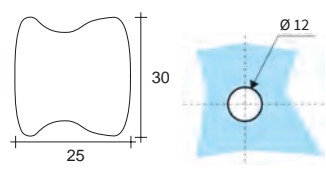
AISI-316

**DOBLE**

Inox brillo	<b>889.56J IB</b>
Inox mate	<b>889.56J IM</b>

**SIMPLE**

**889.56**



1902  
1908

### POMO 25 x 25 x 40 mm

AISI-304

**DOBLE**

Inox brillo	<b>1056 IB</b>
Inox mate	<b>1056 IM</b>
Negro mate	<b>1056 NE</b>

**SIMPLE**

**1056.1**

### POMO 35 x 35 x 42 mm

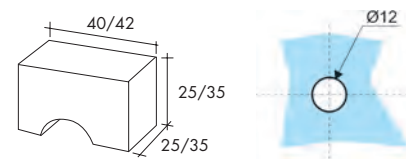
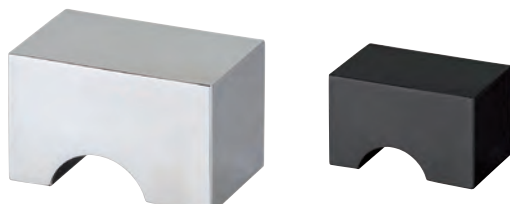
AISI-304

**DOBLE**

Inox brillo	<b>1056.2 IB</b>
Inox mate	<b>1056.2 IM</b>
Negro mate	<b>1056.2 NE</b>

**SIMPLE**

**1056.3**



1906  
1907

### POMO

AISI-304

**A = 34 B = 22 L = 34**

**DOBLE**

Inox brillo	<b>889.7J IB</b>
Inox mate	<b>889.7J IM</b>

**SIMPLE**

**889.7**

**A = 48 B = 29 L = 41**

**DOBLE**

Inox brillo	<b>889.8J IB</b>
Inox mate	<b>889.8J IM</b>

**SIMPLE**

**889.8**

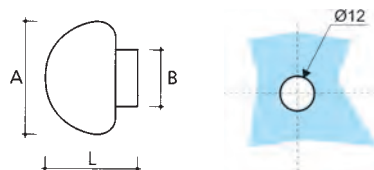
**A = 59 B = 30 L = 50**

**DOBLE**

Inox brillo	<b>889.9J IB</b>
Inox mate	<b>889.9J IM</b>

**SIMPLE**

**889.9**



1903  
1904  
1905